

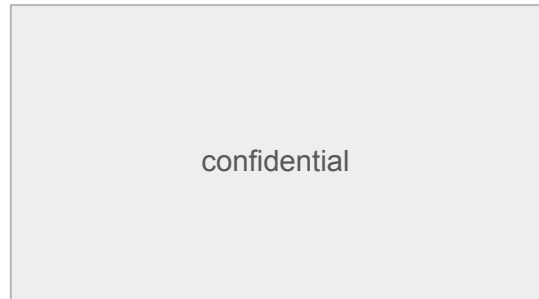


## Ecological Art: Give Space Urban Design Methodology

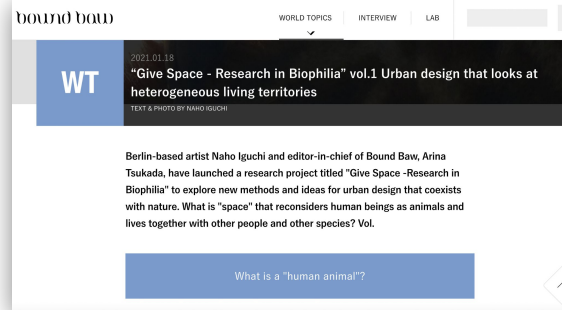
Berlin, Tokyo, African Savanna - 2018 to present

The purpose of the Give Space Urban Design Methodology is for humanity to return space to all living beings. While the ultimate objective is to restore habitats and yield measurable outcomes in biodiversity net gain, the practice does not end with the physical. It is not merely about designing our built environment; it is about the practice of giving mental and emotional space to one another in our daily communication, and cultivating inner space and peace within ourselves. Through this practice, we reshape our Basic Underlying Assumptions, fostering a profound compassion for the environment we have long taken for granted and neglected.

The following pages of the portfolio explain: 1. The basic framework of Give Space, and 2,3,4. specific projects through which Give Space is applied for urban and building design, publication, and an educational program for different generations.



2 A large-scale urban development Project



3. A serial publication on Bound Baw (art science web magazine in Japan)



4. Online and in-person educational workshop

# 1. Give Space Urban Design Methodology

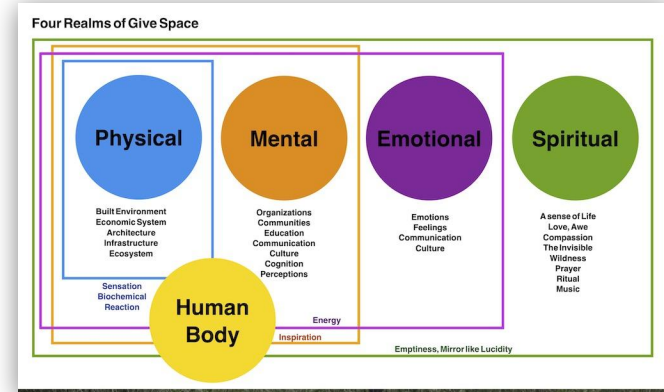
Berlin, Tokyo, African Savanna - 2018 to present



Humanity must live as nature, rather than live with nature. For this, we must demonstrate an ability to give space to others. We clear more and more lands without consideration and kindness to other beings. The excessive and irrational fear and greed for "more" drives many species to extinction.

The emerging role of Human Animal is to return habitats to other-than-human beings. Naho authors the Give Space and guide architects, engineers, developers, and individuals who want to be more connected to Nature through their work. Give Space enables us to make our urban planning and architectural design process more regenerative and biophilic, by addressing not only physical space (built environment), but also complex human systems such as mental, emotional and even spiritual space in our day-to-day communications in our built environment projects.

As an urban resident, Naho always felt that people were detached from their physical senses. Humanity has created a system that grants physical safety, yet seems to cause a different crisis within. This sinking led her to the savanna in South Africa, in search of the essence of human as a living being, which she calls "Human Animal." They know that humankind is intertwined with the rest of the other-than-human worlds. They are humbly aware that humans are not superior to non-human beings. The incredible experience of becoming close to fellow mammals, in particular, Lioness as Naho's muse, led to a realization that we have become oblivious to others' space.



While transforming our physical space of the natural environment, cities, infrastructure and buildings into a healthier and more harmonious place, Give Space is a vehicle to address mental (thoughts, relationships and culture), emotional (feelings and sensibilities) and spiritual (inner consciousness) themes and challenges in the design, construction, and operation phases of any type of place-based projects.

# 1. Give Space Urban Design Methodology

Berlin, Tokyo, African Savanna - 2018 to present



Give Space consists of five disciplines: 1) Regenerative Thinking, 2) Biophilic Design, 3) Communication Process Design, 4) Ecological Art, and 5) Presence Practice.

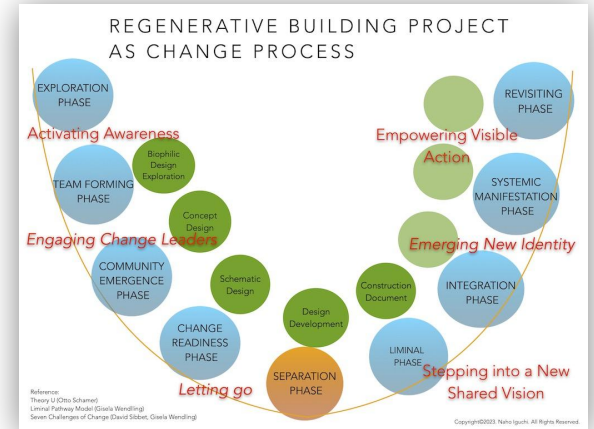
The ethos of Regenerative Thinking is to learn from the ecosystem. In order to restore what human civilization has deprived of the Earth, it is crucial to understand different scales of ecosystem functions in a regional biosphere where a built- environment project takes place; micro climate, geology, physiography, hydrology, soils, wildlife,

and people.

The first step of Biophilic Design is to ignite biophilia; innate love for nature, within all stakeholders of a place-based project, ideally before the concept design phase, whereby an actual development plan takes non-humans' habitat into account. Reinvention of our physical space requires reinvention of our mindset, culture, and business-as-usual behaviors. Communication Process Design helps create a space for trust, vulnerability, and authenticity in teams, client relations, and communities.

Ecological Art may take multitude of expressions. However, it begins with storytelling of two crucial players : My Story and the Story of the Place. Ecological Art guides people finding their own inner voice for why they chose to do what they were doing. Then, evidence-based ecological site study should be conducted to know about the place.

Practice of deepening our spiritual space means “to reclaim an ability of sensing one’s own aliveness and presence of the other lives.”



The Give Space process begins with the exploration phase in which property owners, architects, general contractors, local ecologists, other natural and social scientists, and key players all come together to study their building project site to collect data and listen to “the voice of a place.” Through it, stakeholders grow their intimate curiosity and love for the place, which is the foundation for rather personal commitment and will to restore and regenerate the place.

## 2. A Large-scale Urban Development Project

Tokyo, Japan, 2020-present.

With Give Space, Naho designs and facilitates a long-term process of an urban development project at the heart of Tokyo.

Naho's roles as an ecological artist are multifold: 1) enlighten all stakeholders in regenerative thinking and biophilic design, 2) plan and guide regular meetings and multi-stakeholder workshops for their biophilic design process, 3) design a structure of, as well as foster culture of, a non-hierarchical, inter-organisational team based on Communication Process Design, which Naho had invented a decade ago based on her organisational psychology background, 4) Ignite playfulness and creativity in individuals in the client system, 5) help people nurture compassionate awareness for other-than-human beings (Biophilia) .

For the first two years, the Give Space process supported the urban planners, architects and engineers in becoming familiar with the principle of regenerative design, "leaning from the local ecosystem," and finding technical, architectural strategies to be as ecological and site-specific as possible. Currently, Give Space serves the planners in new business development so that not only the buildings but also services and contents at the buildings after their opening will be right on the regenerative path.

Regenerative design ain't merely applying a PV rooftop or vertical farming on a building envelop. In addition to such materialistic solutions, it is a deep transformative process in our daily work behaviors, decision-making methods, and leadership.

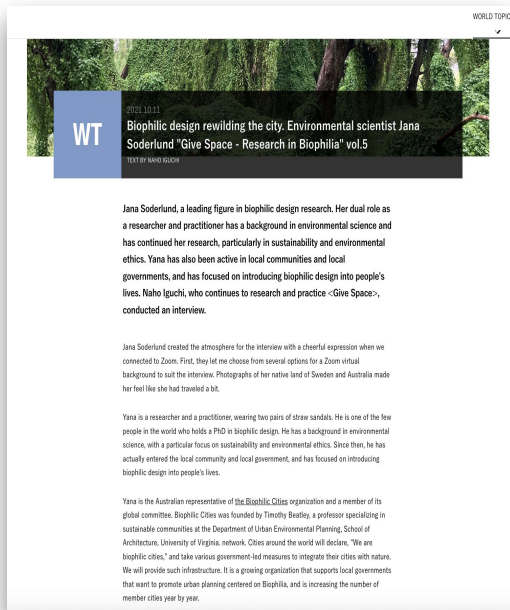
Hence, Give Space also intervenes with mental, emotional and spiritual spaces that are essential characteristics of human species.

For instance, my clients engage themselves with one-on-one dialogues around a "centerpiece," an artistic, sacred object that is placed at the center of a room when we have important multi-stakeholder workshops. The centerpiece is a representation of nature of the place where the development project takes place, from soil and tree roots underneath the buildings to flourishing flowers. The centerpiece is designed by a local florist and the team.

### 3. A serial publication on Bound Baw (art science web magazine in Japan)

Online, Japanese, 2018-2021.

A sample translated text in ENG is in the other portfolio.



Naho and her ally, editor-in-chief of Bound Baw, Arina Tsukada, launched a research project "Give Space -Research in Biophilia" to explore new methods and insights for urban design by which mankind can coexist with nature.

The fundamental research question is, "how do we reconsider 'SPACE' in order to share it with other species and other people and to recognize that we are part of other living systems?"

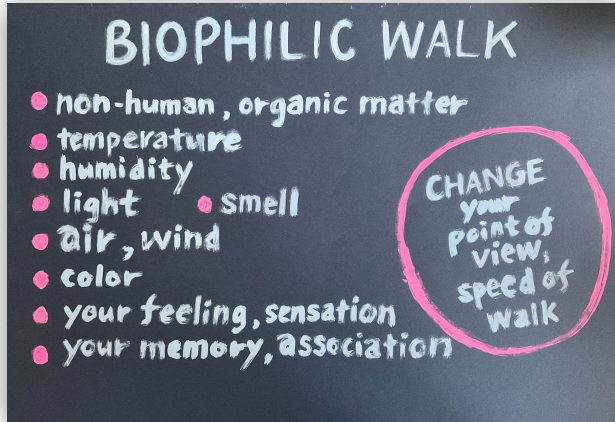
The research goal is to present multidisciplinary approaches to urban design and weave a new narrative that is not only "regenerative" but also carries the quintessence of Japanese Philosophy of Nature.

Naho conducts interviews with pioneers in biophilic design and regenerative thinking in the build environment field around the globe such as Jason F. McLennan. While sharing their wisdom with Japanese audience, it also aims to integrate their knowledge and advice with Give Space Urban Design methodology. The updated methods are tested at Naho's place-based projects. Meanwhile, Arina curates art exhibitions and conferences to elucidate ambiguous boundaries between the visible and the invisible, the real and the imaginary, and humans and AI.

Bound Baw is an owned media by Osaka University of Arts. Its mission is to explore a cutting-edge crossfield of art and science in the world and educate the next generations in Japan.

## 4. Online and In-person Educational Workshop

Online and Offline 2022-present.



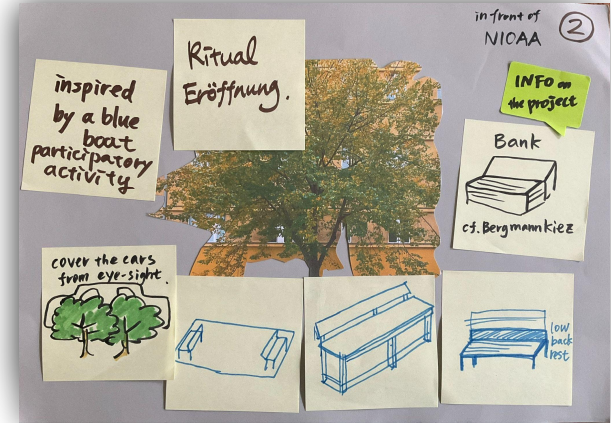
Naho designs and facilitates Give Space workshops in various occasions, ranging from ideation and planning for a corporate client in the context of urban development, to experiential learning opportunities for children. Any type of Give Space workshop is based on the same principle: igniting one's Biophilia, an innate passionate love for nature, exploring the environment on foot which we are in, collecting evidence-based information on the place,

and applying artistic expressions to write a collective narrative. For built environment projects, the Give Space workshop is a safe haven where participants can show their playfulness, imagination, and vulnerability, which helps rapport-building for a design team as well as stakeholders.

For individuals who aspire to do more for nature but are not sure about how they shall approach, the workshop equips them with a new perspective that lowers the bar to take the first baby step in spite of eco anxiety and helplessness towards such a daunting task of climate change, CO2 emissions, and loss of biodiversity.

For children and their families, the workshop provides them with an open field where they can express their passion and curiosity for nature and other creatures at fullest, which school education often doesn't cover enough.

The online course consists of six or more modules, followed with a two-month-long prototyping phase.



Participants take on the challenge of creating living, spatial prototypes that transcend human-centeredness. The final output is a process design for a place-based project. Grounded on scientific knowledge and research, we understand the physical space that makes our existence possible, and through dialogue with other participants, self-observation and meditation, we reclaim our inner space and stillness, and learn how to give back more space to other living beings.

# Artistic Expression: Journey to Lioness

Berlin, African Savanna - 2019 to present

I produce and direct my short essay-documentary film, “Journey to Lioness.” It aims to document my way of living as a Human Animal in relation to my muse, Lioness. Simultaneously, it will archive the evolving process of the GIVE SPACE methodology creation. So far, I produced two videos: 1) a teaser 2) illustration book. I plan to produce the main short film as more place-based Give Space projects emerge.

## Selected Participation

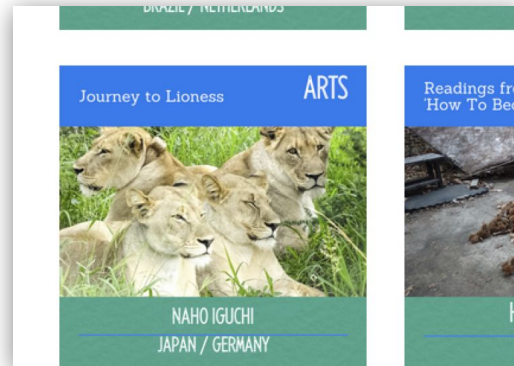


Nature, Art, and Habitat (NAHR)  
REFLECTION. ANIMALS: Interdependence Between  
Species  
a curated video: Journey to Lioness -Kamishibai-  
[https://nahr.it/NAH\\_Reflections](https://nahr.it/NAH_Reflections)

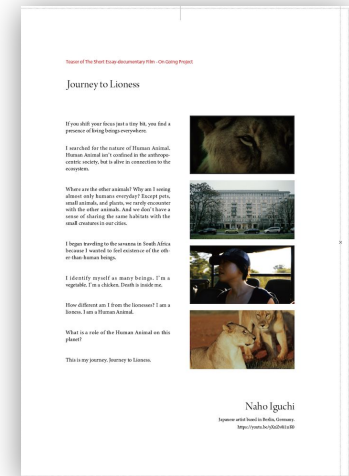
Journey to Lioness Teaser:

<https://www.youtube.com/watch?v=yXnZv8i1uK0&t=1s>

Journey to Lioness -Kamishibai- (illustration) <https://youtu.be/eb2HFxa8G5M>



The Nature of Cities Festival 2021  
Plenary 9 art intervention  
a curated video: Journey to Lioness Teaser  
[https://tnoc-festival.com/wp/wp-content/uploads/2021/05/TNOC\\_FESTIVAL\\_PROGRAMME\\_2021c.pdf](https://tnoc-festival.com/wp/wp-content/uploads/2021/05/TNOC_FESTIVAL_PROGRAMME_2021c.pdf)



The art book “Liminal Voice”  
a curated video: Journey to Lioness Teaser