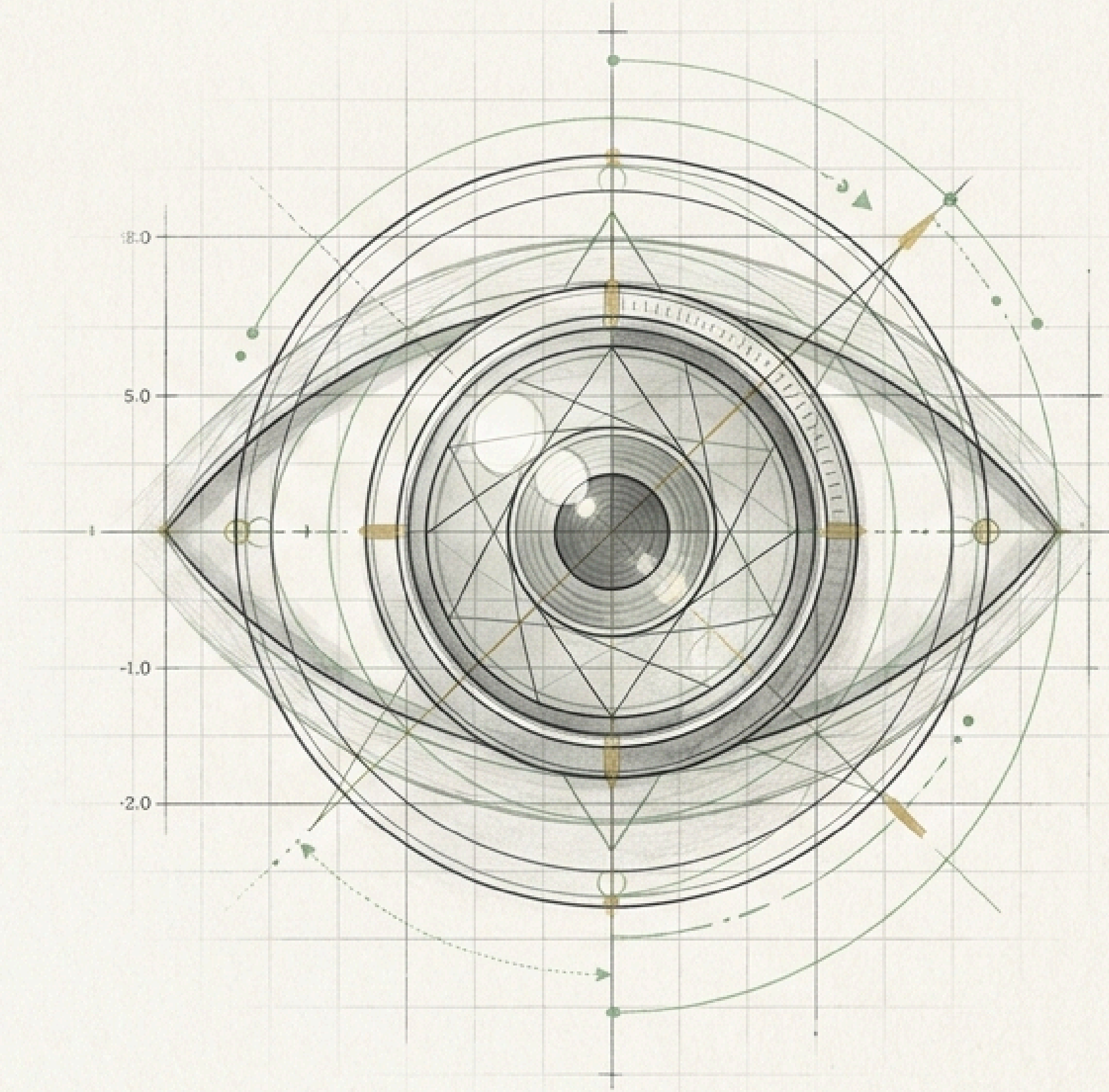


Elevating Culture: The Integrated Path

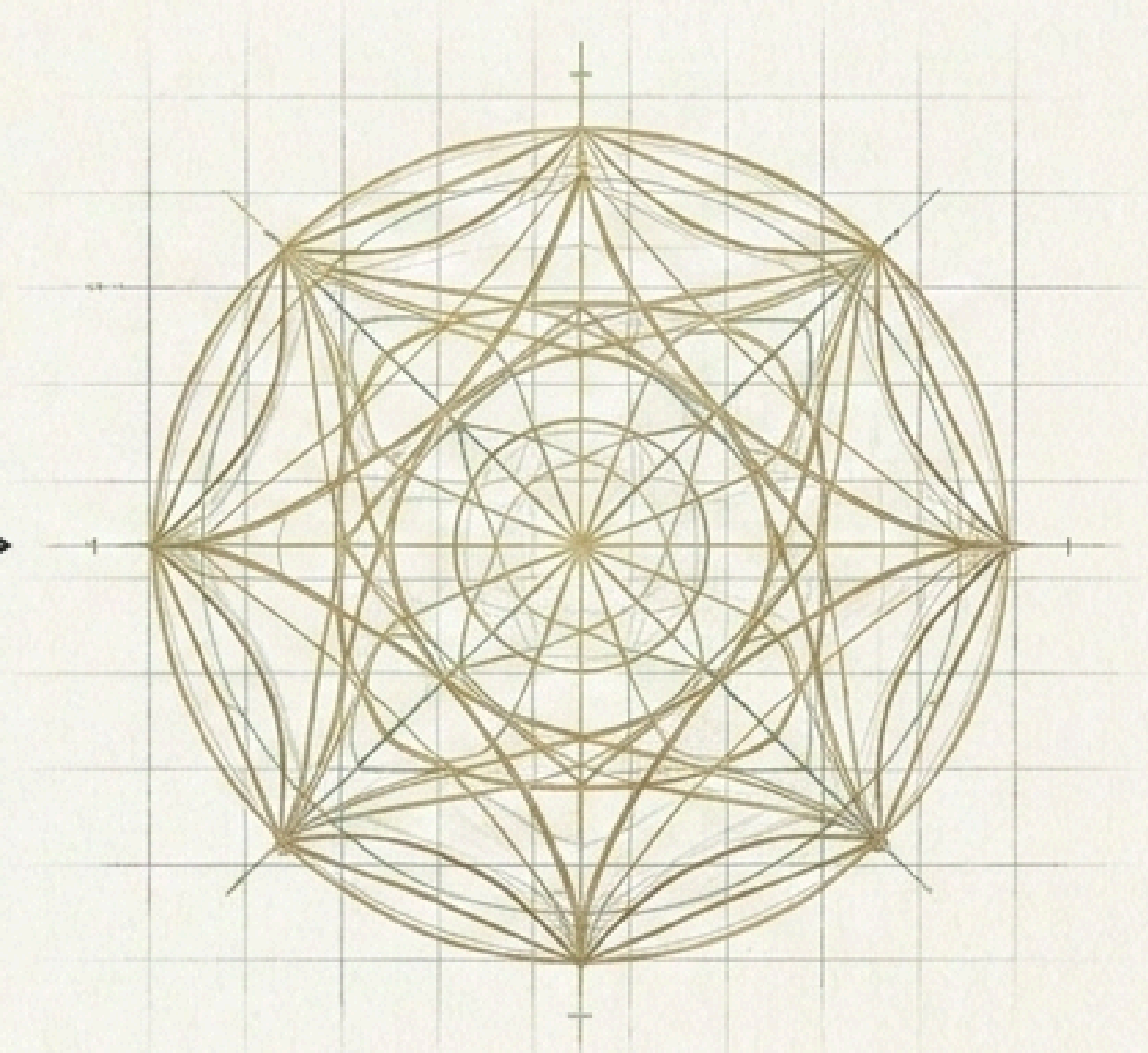
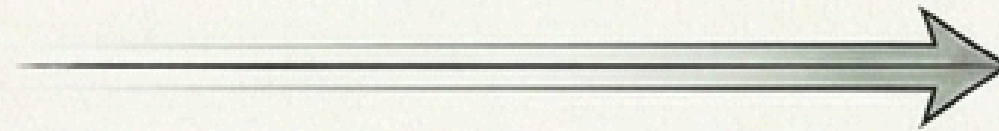
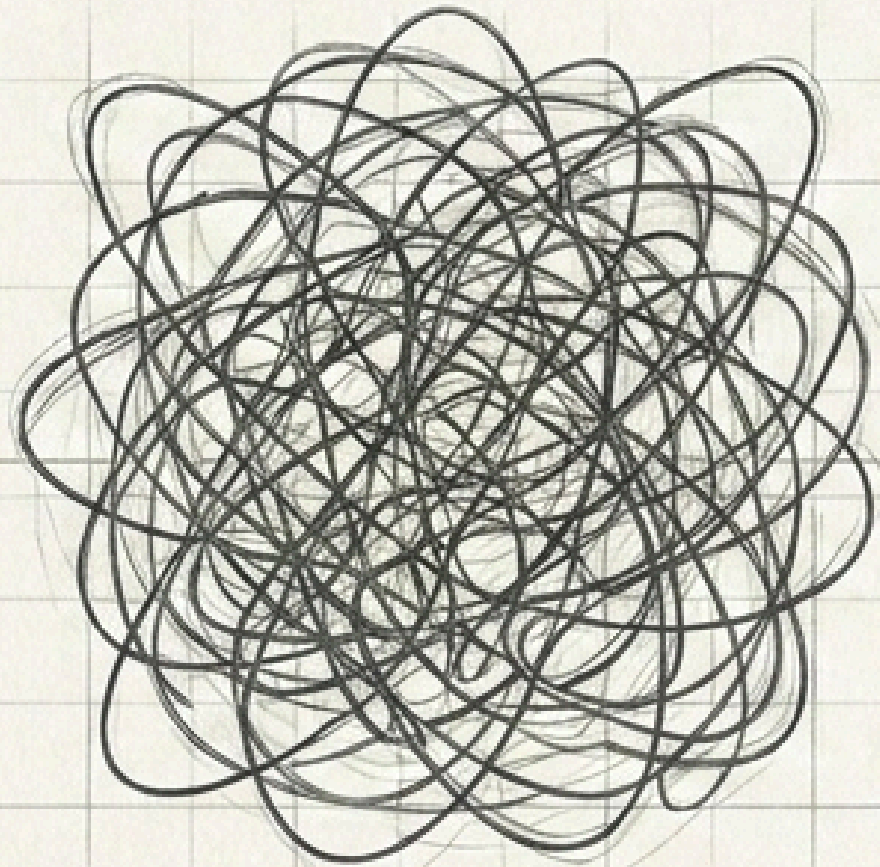
Life as Integrated Anthropological Fieldwork

To elevate culture in its widest and deepest sense, we must stop merely existing within it and start observing it. By treating our daily lives as active fieldwork, we de-pattern cultural conditioning and awaken to the total picture available to us.



The Explorer's Gaze

In the West, our way of living is often defined by noise, avoidance, and automaticity. The Explorer's Gaze allows us to see the gold within the decay. From the tensions of the boardroom to the complexities of family dynamics, active observation transforms obstacles into rich qualitative data.



The Paradigm Shift

Habitual Reaction

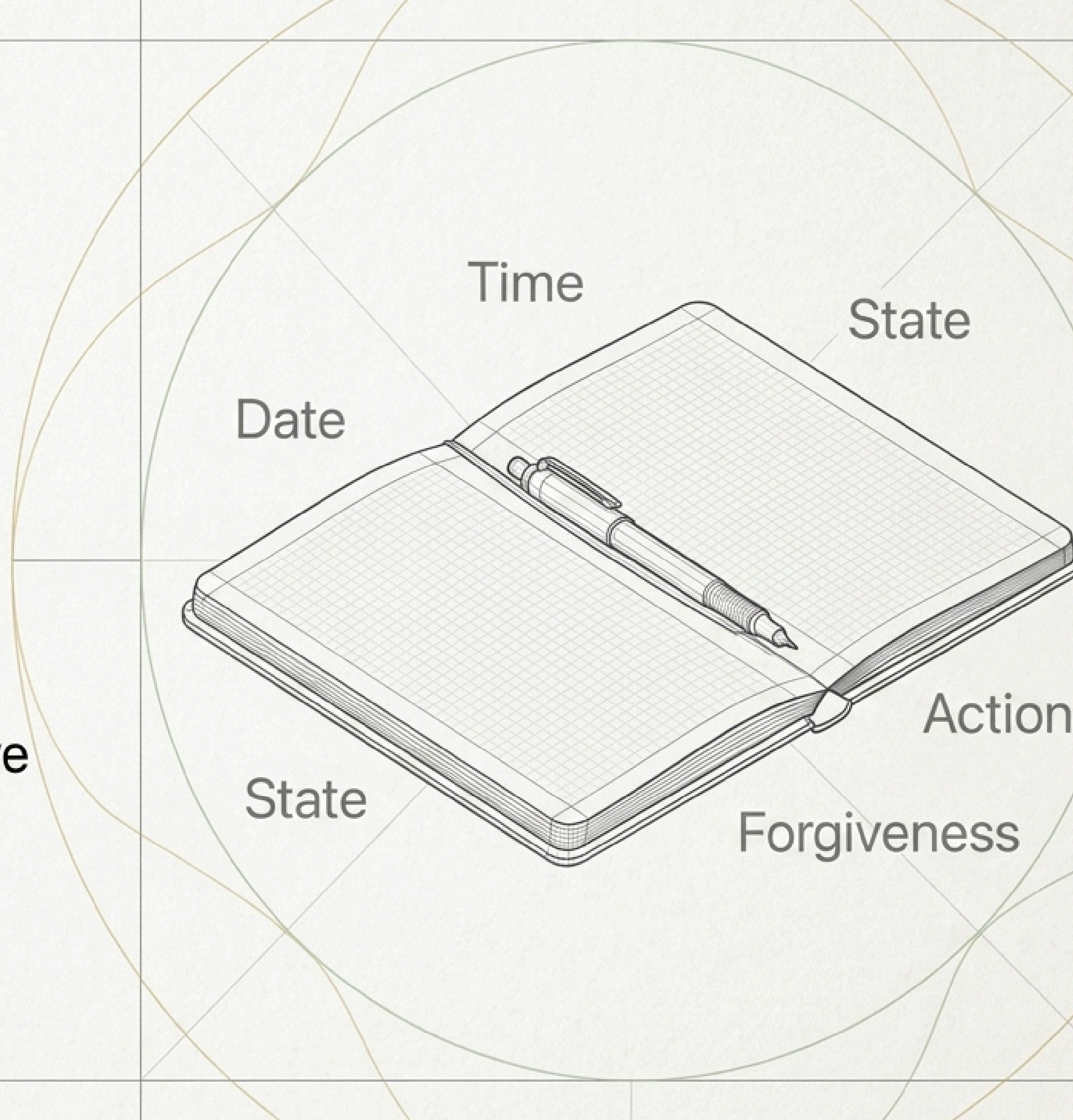
- Entangled in the moment
- Driven by cultural conditioning
- Highly judgmental
- Fueled by avoidance
- Closed off

Exploratory Co-Creation

- Witnessing the moment
- Suspending assumptions (bracketing)
- Non-judgmental
- Fueled by curiosity
- Open-ended

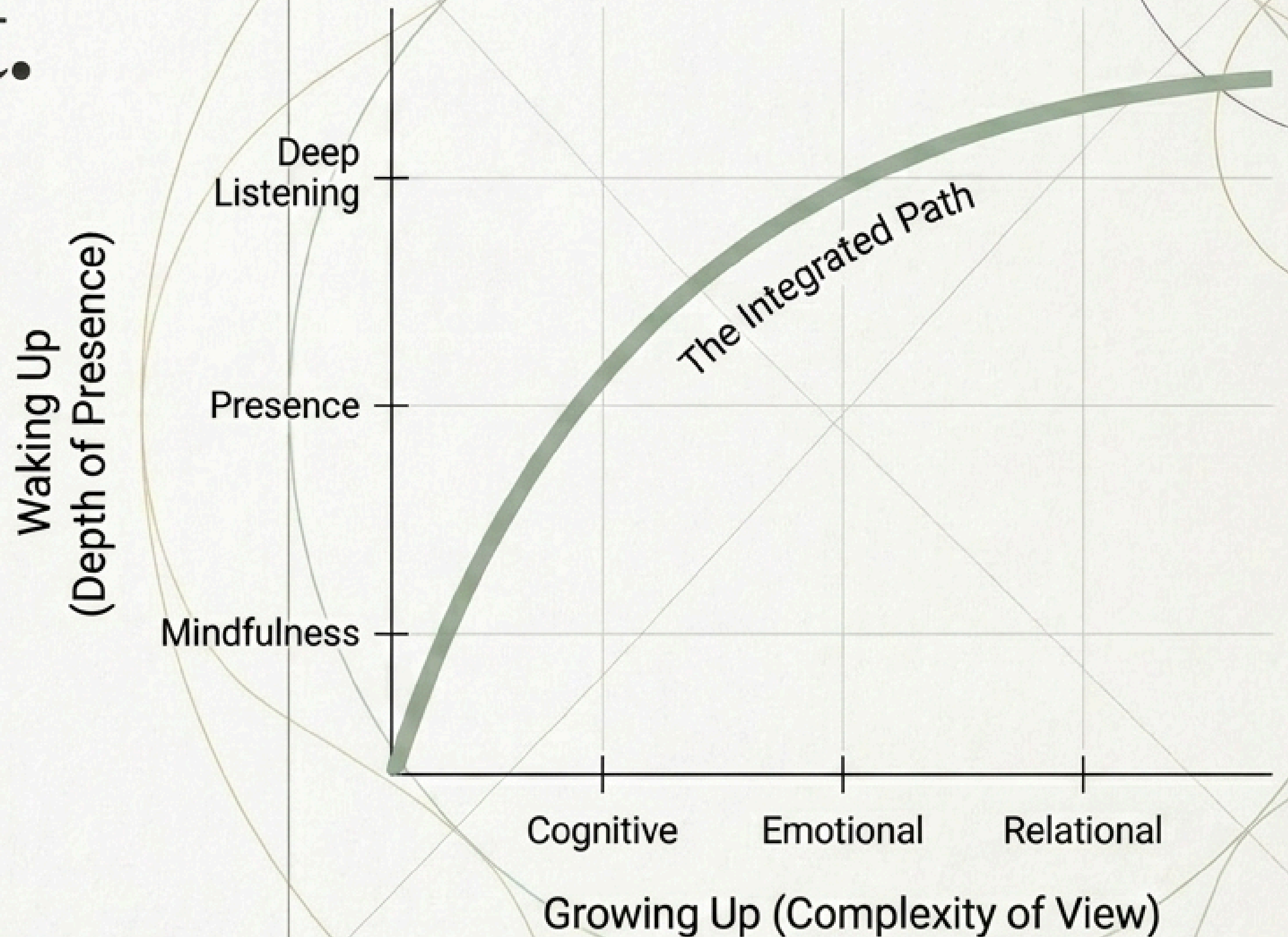
Thinking with the Hand.

The mechanism of change is the physical act of recording. Making observations—acting as the witness in the background—and documenting insights creates warm data. It turns a subjective, fleeting experience into an objective tool for development.



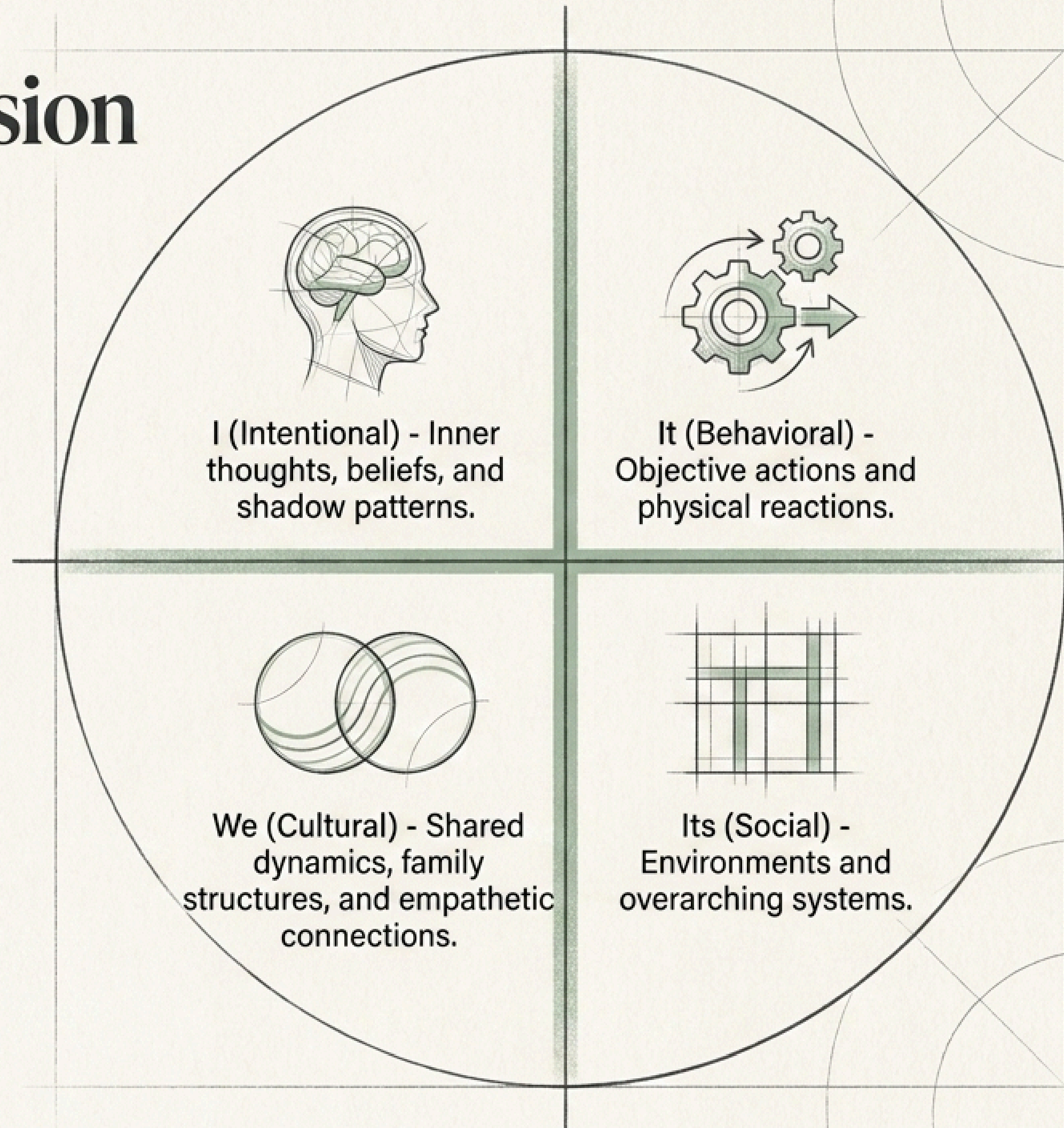
The Architecture of Development.

True cultural elevation requires integration along two distinct, intersecting paths.



Expanding the Field of Vision

To observe culture accurately, we map our field notes across four distinct dimensions.



“I reached out to Søren in times of turmoil in our business. Since, I have been implementing some of the rituals, strategies and mindsets that Søren shared with us and now I see and feel our culture is growing around empathy and effort.”

- Mariana Serrano Robles
CEO, Fase10

Elevating Together.

When we suspend our assumptions, record our insights, and integrate our growth, we do more than improve ourselves. We co-create a culture of innovation, deep listening, and regenerative growth.

