

*Emma Nasiero*

**Creative Experience Designer**  
Art | Hospitality | Sense of Place

# About me

Interior Designer, Artist and Creative Facilitator with international experience across design, hospitality and experiential environments. My work brings together spatial sensitivity, material awareness and a strong focus on emotional connection.



# Design Philosophy

Inspired by the Japanese philosophy of wabi-sabi and by the landscapes of Liguria, I explore the relationship between people, places, materials and memory.

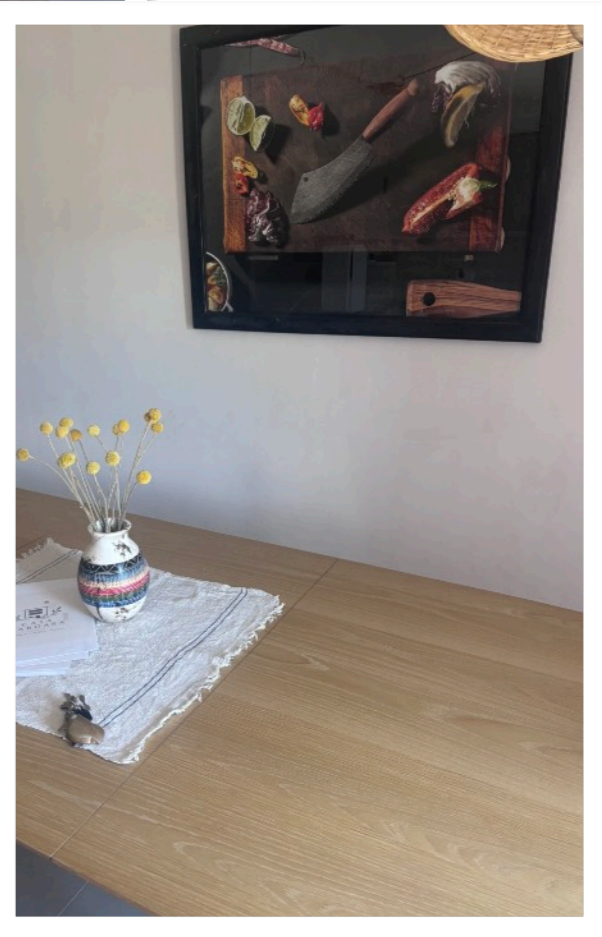
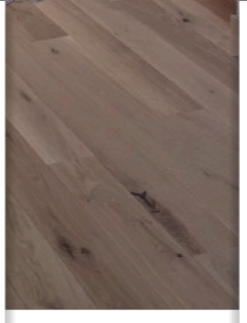
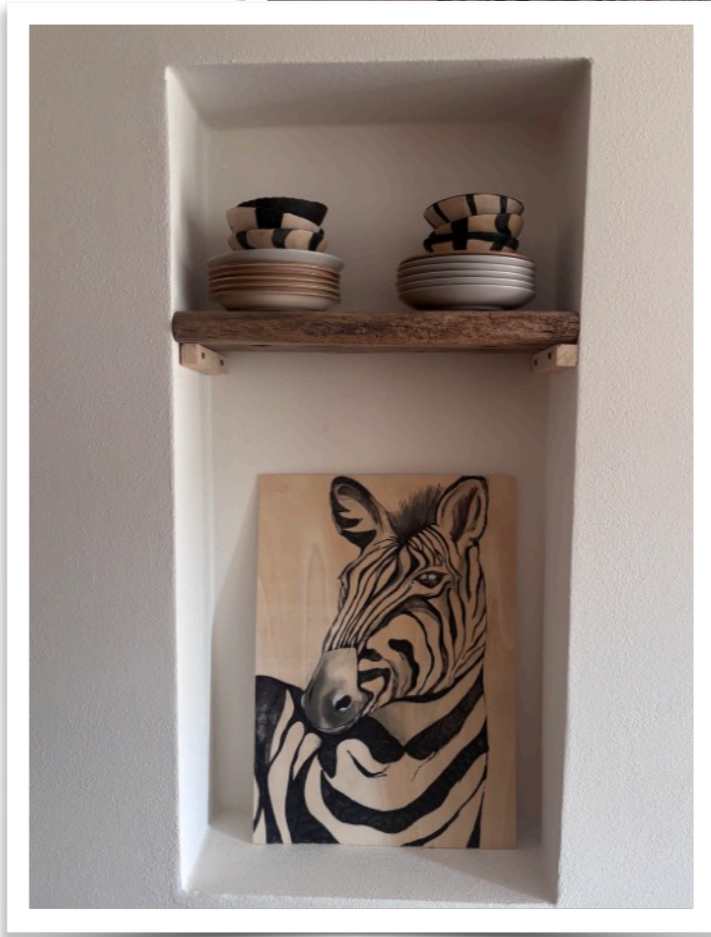
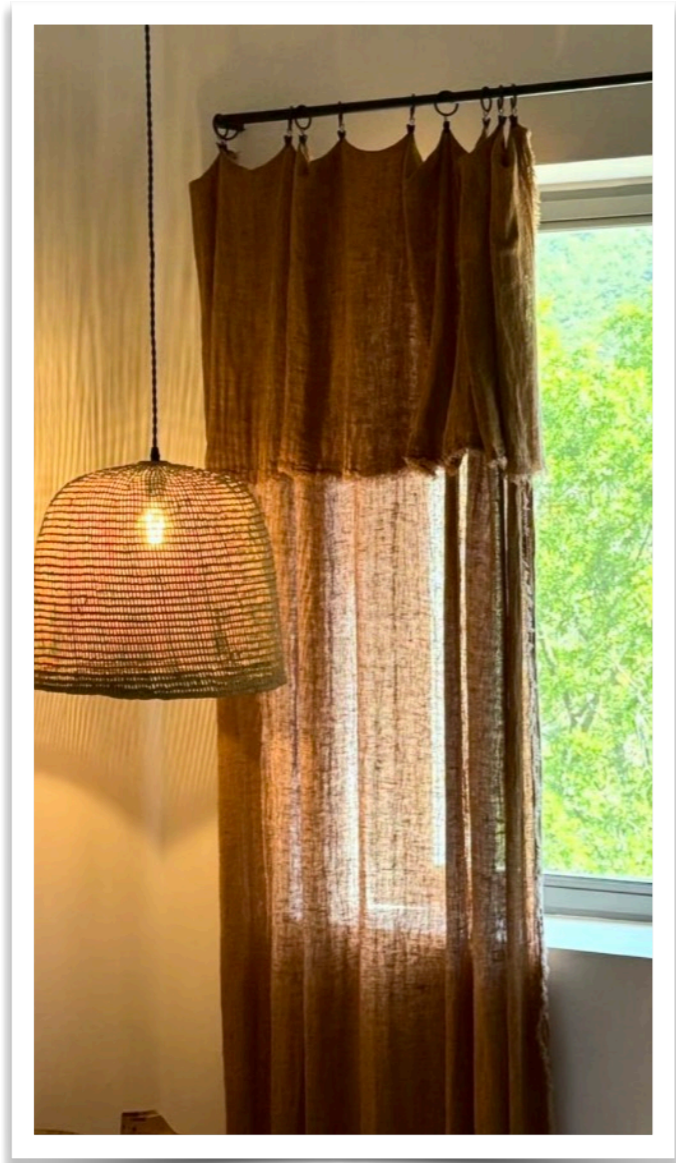
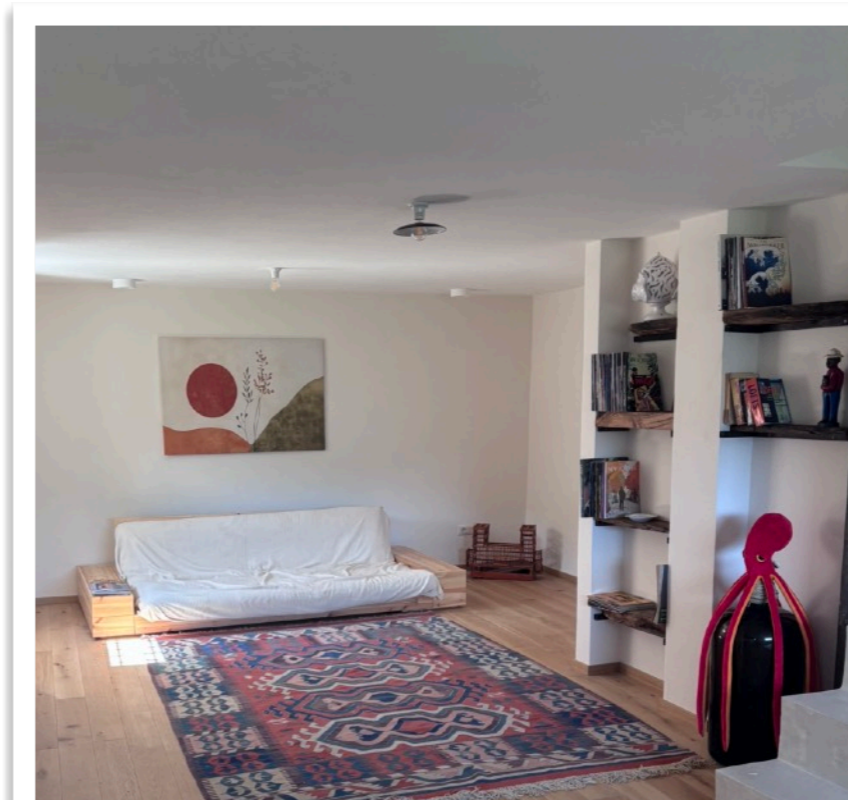
I am interested in creating experiences that feel grounded, calm, tactile and emotionally



# What I create

My practice moves across interior design, hospitality spaces, artistic interventions and immersive workshops.

In each project, I seek to create a sense of presence, authenticity and belonging.



# Framura Overview

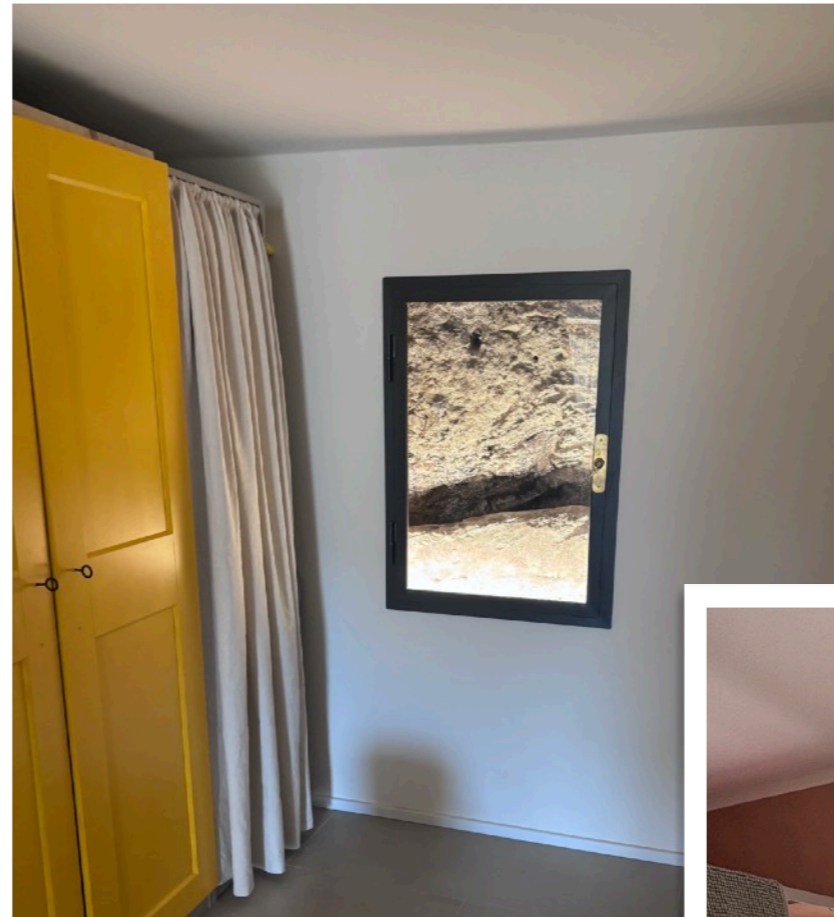
Framura - Hospitality shaped by memory

resonant. This project was conceived as a quiet and welcoming hospitality experience rooted in simplicity, reclaimed materials and a strong connection to place.

Reclaimed doors, natural wood, soft earthy tones and restrained gestures shape an atmosphere of warmth and understated beauty.

The space embraces imperfection and allows materials to retain their history.

More than a functional interior, the project was designed as an emotional landscape - one that invites guests to slow



# Art on wood

My artistic practice on wood grows from the same sensibility that informs my spatial work: attention to material, respect for imperfection and connection with the natural world.

I work with wood as a living surface, allowing grain, texture and irregularity to become part of the final piece.

Through **creative workshops and immersive experiences**, I create spaces for participants to slow down, observe, make and reconnect.

These experiences are designed to nurture attention, sensory awareness and meaningful interaction with place.

I design experiences where space, material and emotion come together - creating places that feel human, rooted and memorable.

