

♦ MINDFULNESS ♦

*The Future of Leadership:
Bridging Somatic Wisdom and
Living Systems Strategy.*

Cultivating systemic resilience, deep alignment, & adaptive culture for 2026–2027.

Presented By:
Vanessa LeMaistre



Introduction to ✨ Transformation

Hi, I'm Vanessa LeMaistre with an **M.A. in Resilient Leadership** and extensive training as a facilitator, my work bridges **Eastern and Western spiritual and educational traditions**. Somatic Strategist: Integrating bodily intelligence with organizational design. The future of leadership relies on tuning into our bodily intelligence to navigate complex, evolving organizational ecosystems. By blending inner awareness with strategic action, I help workspaces cultivate deep, systemic resilience.

- *Integrated Lineage: Merging Western academic frameworks with Eastern and Indigenous somatic traditions.*
- *Nervous System Architecture: Transitioning teams from reactive survival states to creative focus.*
- *Ecosystemic Design: Transforming rigid structures into adaptive, living organizations*





Understanding How Mindfulness Works & The "Why Now?" Factor

Mindfulness strengthens the connection between the mind and body through conscious breathing, observation, and stillness. It activates brain areas linked to attention and emotional regulation.

Highly connected, yet deeply fragmented. Intellectual frameworks alone can no longer solve corporate burnout or cultural disconnection.

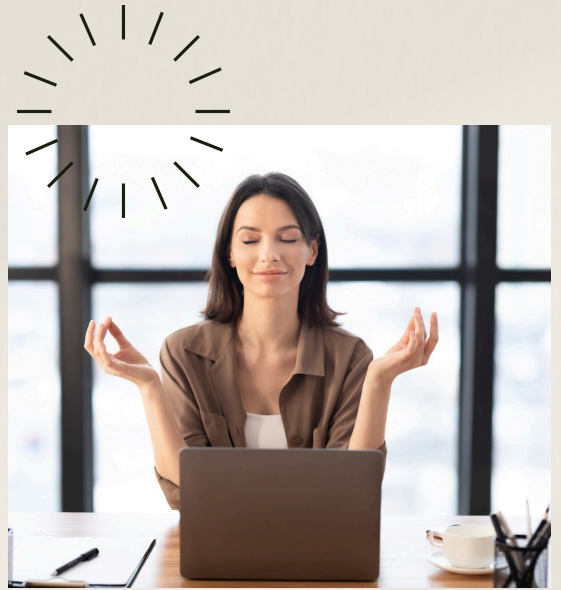
- *Increases activity in the prefrontal cortex*
- *Reduces overactivity in stress-related brain regions*
- *Boosts emotional self-awareness*
- *Trains attention and focus*

Mental Health Benefits

- *Reduces anxiety and depression symptoms*
- *Supports a calmer mindset* *Increases activity in the prefrontal cortex*
- *Reduces overactivity in stress-related brain regions*
- *Trains attention and focus* *Boosts concentration and task performance*
- *Encourages thoughtful responses under stress*
- *Improves collaboration and empathy*
- *Reduces burnout and fatigue*



The 2026-2027 Workplace Paradox



- *AI & Technological Stress: Rapid digital acceleration demands a matching investment in human grounding and somatic presence.*
- *Chronic Cognitive Fatigue: Constant screen-time numbs analytical minds; teams require physical sensory decompression to remain innovative.*
- *The Isolation Epidemic: Hybrid and remote structures have fractured organizational trust and eroded workplace cohesion.*





A Holistic Toolkit for Transformation

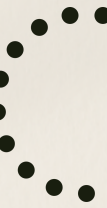
Somatic Anchors:

- Guided Meditation
- Crystal Singing Bowls
- Gong Immersions
- Shamanic Drumming

Modern Frameworks:

- Theory U Methodology
- Restorative Talking Circles
- Consensus-Based Alignment
- Psychological Safety Design
- Diversity as an Ecosystem
- 2026-2027 Leadership Dynamics





Mindfulness for Productivity

Being mindful enhances clarity and efficiency by reducing mental distractions. It helps individuals prioritize tasks and stay present with what matters most.

- *Increases cognitive flexibility*
- *Reduces multitasking habits*
- *Improves time management*
- *Encourages deep work and single-tasking*

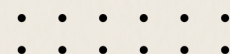
How we safely and effectively bridge deep inner work with practical corporate application.

Neurological and Somatic Regulation:

Sound and meditation as functional workplace technologies.

- *Step 1: Arrive (Decompress)*
Action: Sound healing, breath, and meditation.
Outcome: Regulate the individual and collective nervous system. Drop participants out of survival mode.
- *Step 2: Explore (Facilitate)*
Action: Restorative talking circles and Theory U frameworks.
Outcome: Introduce non-hierarchical dialogue, encourage structured vulnerability, and surface hidden insights.
- *Step 3: Anchor (Integrate)*
Action: Experiential biophilic and systemic exercises.
Outcome: Lock leadership, diversity, and optimization concepts directly into cellular and operational memory.





Cultivate A Resilient Culture



Regulated Culture:

Documented reductions in employee burnout, screen fatigue, and nervous system stress.

Relational Trust:

Measurable increases in psychological safety scores and transparent communication.

Systemic Integration:

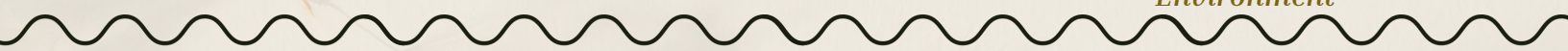
Accelerated lateral thinking and collective alignment for 2026–2027 leadership challenges.



Improved Cultural Dynamic

Team Improvement

Motivating Work Environment



THANK YOU!

Presented By: Vanessa LeMaistre

Contact

vanessadlemaistre.com
+1 323-649-0770

